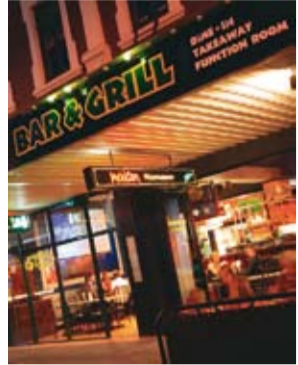


Horsham what to see and do

With its vibrant community and well-kept streets, parks and river, **Horsham** was declared Australia's Tidiest Town in 2001, and has been a runner up many times.

Enjoy the beautiful **Botanic Gardens**, designed by Guilfoyle, who laid out Melbourne's Botanic Gardens. Stroll amongst the ancient red gums lining the **Wimmera River**. This is a favourite spot for rowing, kayaking and canoeing, with picnic and BBQ areas. Visit the **Police Paddock** another good place to walk and observe local flora and bird life.



Horsham, centrally located in the Wimmera region, offers excellent opportunities for shopping, dining, entertainment and accommodation. Whatever you choose to do, you are assured of a warm welcome in Horsham.

The Wool Factory is a unique, community based project, staffed by people with disabilities. It produces some of the world's finest wool. Visit the new **Horsham Aquatic Centre** with indoor heated pool and gym. Try your hand at the **Stone Forest Garden Mini Golf Course** or visit the **Horsham Lanes and Games** for Tenpin Bowling.

Horsham's beautiful 18 hole Golf Course is rated in the top 100 of Australia, with a professional shop and fine bistro. **The Horsham Racecourse** also has excellent facilities and an exciting racing program.

The Wimmera provides a warm dry climate which is perfect for alfresco dining with a glass of fine wine from one of western Victoria's many wineries.

Accommodation in and around Horsham is available to suit all budgets, with excellent motels, hotels, apartments, bed and breakfasts, cabins and camping grounds.

Arts and culture

The Horsham region is renowned for its dynamic arts community. You will find unusual festivals, a superb art gallery, excellent theatre and vibrant arts workshop. **Wesley Performing Arts Centre** was developed by the community and boasts perfect acoustics for music and theatre performances.

The Horsham Regional Gallery has state-of-the-art facilities and is housed in a late 1930s Art Deco complex, which includes the Town Hall.

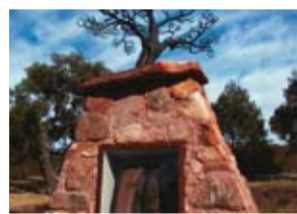
At the **Makers Gallery**, adjacent to the library, you can view and purchase local artists work in a variety of media.

Private galleries well worth a visit include **Old Mill Furniture**, **Werrimul Arts and Crafts**, **Olde Horsham** and the eccentric **Café Bagdad**.



Horsham Regional Art Gallery is one of rural Australia's best, with frequently changing exhibitions and a fine collection of art and photography.

One of the most stunning buildings in town is the **Catholic Church of St Michael and St John**, an award-winning design of 1986, by one of Australia's best architects, Mr Greg Burgess. He also created **Brambuk Aboriginal Cultural Centre**, in Halls Gap.



Art in public places includes Tim Jones delightful scar tree sculpture, near City Gardens Estate and the view the Angi Polglaze's totem pole in Roberts Place.

In a commanding position overlooking the main street is **St John's Anglican Church**, built in 1957, with significant stained glass and sculpture. The **Uniting Church** also boasts two exceptional windows.

Horsham Golf Course

Horsham Golf Course is a very popular destination for golfers from all parts of Australia and overseas.

Excellent grass greens, fully tree-lined fairways, and a gently undulating layout set on ideal sand belt, makes Horsham Golf Club a must for serious golfers.



Horsham Golf Club has a fully stocked professional shop with two PGA trained members on hand.

Four-time winner of the 'PGA Course of the Year', the Club hosts a number of open events, including qualifying rounds of the prestigious **Ivo Whitton Amateur Championship**, **Holden Scramble** and **Mazda Fourball** which attracts many visitors to the course.

The newly built clubhouse, with magnificent views of the course, is arguably the Wimmera's first choice for wedding receptions and has fully qualified chefs on hand.

The clubhouse features a fully functional conference centre with state-of-the-art equipment.

The club has a fully stocked professional shop with two PGA trained members on hand.

Horsham Golf Club features an 18 holes greens course, Par 71, ACR 71, 5,854m. Ladies Competition: Tuesday and Thursday. Mens Competition: Wednesday and Saturday. Visitors welcome.



Horsham Golf Club is rated amongst the best in Australia ranking in the top fifty public access courses.

Locally grown produce

You are invited to share the food, wine and locally grown produce by discovering farm gate or products for sale at local cafés and retail outlets .

Farmers and businesses in the region produce organic vegetables, duck and turkey, premium red and white wine, native wildflowers, cashmere wool, herbs and native trees and shrubs.



Our region specialises in a range of produce such as extra virgin olive oil from local groves within the Wartook Valley (Grampians) and Little Desert.

Lentils and chickpeas are grown on the Wimmera plains and our wheat and grains are baked into local bread. Pure honey stocks the shelves of many supermarkets.

Our region produces some of the very best ultra-fine merino wool in the world. Mohair, beef, lamb and duck are all produced in our clean fresh country air.

We are proud of our locally grown produce and we enjoy sharing with our new friends.



Much locally grown produce is sold in cafés and restaurants in Horsham or you might find this same product in Melbourne, Adelaide or around the world.

Wineries

The Limestone Coast region is well known for its premium wine with the Coonawarra south of Naracoorte, famous for its Cabernet Sauvignon grown on terra rossa soil over limestone.

Make your way onto Horsham the heart of the Wimmera and discover the Grampians Wine Region, one of the most significant, acclaimed wine regions in the country.



Vines were first planted at Best's and Seppelt in the mid 1860s and as they have prospered, others have joined them to produce wines of exceptional quality.

The wines from the area revolve around the rich, delicate Shiraz wines, however white varieties such as Riesling and Chardonnay also suit the climate, and then there are the sparkling wines and famous sparkling Shiraz. Wines produced in this region are being increasingly recognised by consumers and wine judges alike as top class and great value.



Just a short 10 minute drive west of Horsham, visit the Norton Estate Vineyard. You will be surprised by the premium, quality, award-winning wines ranging from reds and whites, the product of a family owned business.

Coffee, cake and cultural trail

Experience a large number of real coffee cafés and cultural 'experiences'. Cosmopolitan is how you could describe Horsham and our **Coffee, Cake and Cultural Trail** is the experience you must not miss.

Around the trail you will have the opportunity to photograph some unusual architecture.



This trail meanders around the side streets and down the main street linking the cafés and places and spaces of art and culture. Each café, has its own ambience and some combine paintings and other artworks, many for sale.

For the collector there are a number of antiques and collectable shops both in the city itself as well as just down the road.

Why not browse? You might find an unusual piece, or some brick-a-brac or old wares might just catch your eye. Cottage furniture is a specialty with some shops whilst others specialise in old wares.

Paintings and signs can also be found. It really is a matter of calling in and seeing for yourself.



From the art deco style of the Horsham Regional Art Gallery to the significant stained glass and sculpture that adorn a number of the churches.

For more information contact the Horsham Visitor Information Centre on 1800 633 218.

Great Grampians Little Desert Touring 'Cross Country'



**Horsham - Mount Arapiles
Natimuk - Wartook Valley (Grampians)**



Wartook Valley 'walks and waterfalls'

Wartook Valley is the gateway to the Grampians, stretching from Brimpaen in the South around to the dramatic rock hedged line of the Northern Grampians, to Dadswells Bridge. There are many walks and waterfalls to visit and explore.



View large mobs of kangaroos, and emus which are always found throughout the area.

Mackenzie Falls is perhaps the most popular spot in the Grampians. As the river is Horsham's water supply, there is always a good flow of water over the falls. Take a gentle walk to **Broken Falls** or a longer walk to the base of Mackenzie Falls. The many other attractions to the area are:

- Golton Gorge
- Mount Stapylton
- Beehive Falls
- Briggs Bluff
- Zumsteins — Mackenzie RiverWalk
- Asses Ears Mountain Range
- Burrong Falls
- The Balconies
- Mount Zero



Start at the camping area. Follow the track to cavernous wind sculptured rocks, from the top of Hollow Mountain you will get a magnificent view of the Mount Stapylton Range.

Be Safe, Be Prepared

A good quality map should always be carried. Plan your walk and never walk alone. Keep to the walking tracks, mind your footing as some walks may involve slippery surfaces, water crossings and rock hopping . Wear appropriate clothes and sturdy footwear are essential. Always carry plenty of water.

Wartook Valley 'Aboriginal art sites and wildflowers'

For many thousands of years Aboriginal people have lived in the Grampians, and they named their mountain home Gariwerd. Today many Aboriginal art sites have been identified in and around the National Park. Several art sites are open to the public and all are easily accessible.

Some of the Aboriginal Art Sites worth a visit whilst in the area include:

- Gulgurn Manja Shelter
- Ngamadjadj Shelter
- Billimina Shelter Loop
- Manja Shelter



You'll be amazed by the diversity of arts and culture in the Grampians.

Best seen during late winter through to summer, Wartook Valley is one of Australia's richest flora areas with over 1,000 species. Twenty of these, including Grampians Thryptomene, Grampians Gum, Grampians Bauera and Parrot Pea, are not found anywhere else in the world.

With the yellow of the wattles and banksias, the white of the Grampians Thryptomene, Smokebush, the pinks of the Heath, Calytrix and Micromyrtus, the blues of the mints and Brachyscomes, heathlands come to life with colour. Most of these plants may be seen along the Asses Ears Road, Lodge Road and the Rose Creek Road as well as the Roses Gap Road, Halls Gap - Mount Zero Road and Pohlner's Track.



For the keener visitor, the Black Range wildflowers can also be spectacular.

Mount Arapiles

Mount Arapiles is a spectacular feature rising from the Wimmera plains forming part of **Mount Arapiles -Tooran State Park**. Most of the Arapiles plateaus are covered by low, open forest of Long Leaved Box in association with Buloke .



Mount Arapiles is internationally recognised as the leading rock climbing and abseiling area in Australia.

Throughout the park, wildflowers present a colourful display, especially during spring. Enjoy the short walking tracks that link **Centenary Park** to the summit of Mount Arapiles and the sealed **Lookout Road** gives easy access for vehicles.

Little Desert Touring

The **Little Desert National Park** is home to unique wildlife like the **Mallee Fowl** and stretches all the way east to Horseshoe Bend where the desert meets the **Wimmera River**.

This area has seen a lot of history, with some concrete shelters which were part of a bombing and gunnery range during WW 11 in the Central Block, and sugar gum plantations in the **Wail State Forest** to the east of the Wimmera River. Subtle changes in the vegetation and sand make the trek interesting. A popular attraction within the park, apart from the four wheel driving, are the many self guided walks in the eastern block.



Little Desert home to the Malleefowl.

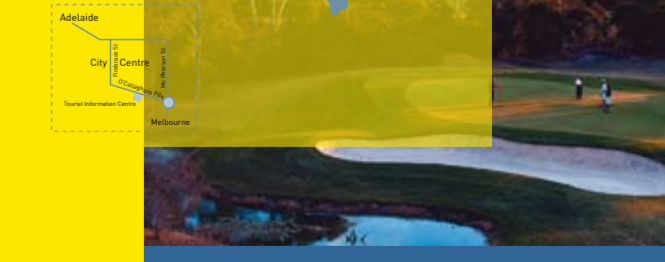
Calendar of events

January	
7.....	Horsham Harness Cup03 5381 0106
13	Blue Ribbon Race Day (events held throughout the year contact for future dates).....03 5381 0261
26.....	Australia Day Celebrations03 5382 9076
February	
5.....	Haven Market03 5382 6313
5.....	Wimmera Racing (events held throughout the year contact for future dates).....03 5358 5288
March	
3.....	Haven Market03 5382 6313
6-8.....	Wimmera Machinery Field Days03 5381 2604
23-30....	Art is.. Everywhere Festival03 5382 0349
April	
1.....	Aust. Women's Motocross Championships and Rising Stars Rookies03 5382 2729
7.....	Haven Market03 5382 6313
19-22 ...	Horsham Country Music Festival03 5388 1247
TBA.....	Wimmera German Fest03 5389 1301
May	
26-27 ...	Grampians Little Desert 4WD Event ..1800 633 218
26-27 ...	Gemstone and Mineral Exhibition03 5382 2874
27.....	Wood and Craft Expo03 5382 2721
September	
1.....	Haven Market03 5382 6313
October	
6.....	Haven Market03 5382 6313
6-7.....	Horsham Orchid Society Spring Show03 5382 3158
12-21....	Awakenings Festival03 5362 4006
13-14....	Horsham Spring Garden03 5382 1068
TBA.....	Horsham East Rotary Art Show03 5382 4621
November	
3.....	Haven Market03 5382 6313
TBA.....	Kannamaroo Festival03 5382 1541
December	
1.....	Haven Market03 5382 6313
9.....	Carols by Candle Light03 5384 7370

Horsham Visitor Information Centre

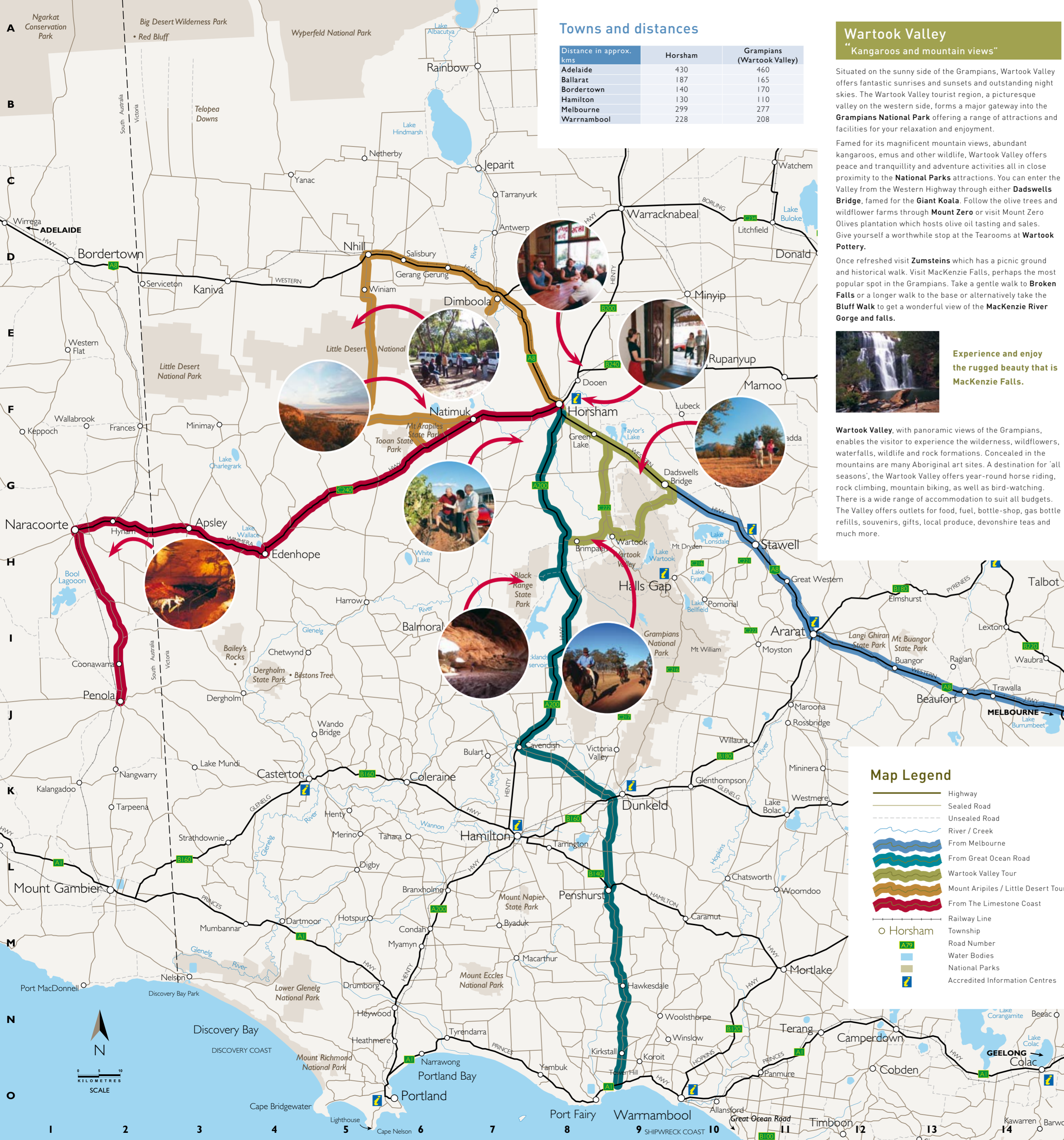
Free accommodation and attractions booking services, internet access, quality local art and craft for sale.

20 O'Callaghan Parade
Post Office Box 857
Horsham, Victoria, Australia 3402
Telephone (03) 5382 1832
Freecall 1800 633 218
Facsimile (03) 5381 0413
Email tourism@hrcc.vic.gov.au
Website www.grampianslittledesert.com.au



Great Grampians Little Desert Touring
Cross Country

Photos courtesy of Horsham Rural City Council, Parks Victoria and H. Hiscocks, D. Wisely and Cressaid Media



Wartook Valley "Kangaroos and mountain views"

Situated on the sunny side of the Grampians, Wartook Valley offers fantastic sunrises and sunsets and outstanding night skies. The Wartook Valley tourist region, a picturesque valley on the western side, forms a major gateway into the **Grampians National Park** offering a range of attractions and facilities for your relaxation and enjoyment.

Famed for its magnificent mountain views, abundant kangaroos, emus and other wildlife, Wartook Valley offers peace and tranquillity and adventure activities all in close proximity to the **National Parks** attractions. You can enter the Valley from the Western Highway through either **Dadswells Bridge**, famed for the **Giant Koala**. Follow the olive trees and wildflower farms through **Mount Zero** or visit Mount Zero Olives plantation which hosts olive oil tasting and sales. Give yourself a worthwhile stop at the Tearooms at **Wartook Pottery**.

Once refreshed visit **Zumsteins** which has a picnic ground and historical walk. Visit **MacKenzie Falls**, perhaps the most popular spot in the Grampians. Take a gentle walk to **Broken Falls** or a longer walk to the base or alternatively take the **Bluff Walk** to get a wonderful view of the **MacKenzie River Gorge** and falls.



Experience and enjoy the rugged beauty that is **MacKenzie Falls**.

Wartook Valley, with panoramic views of the Grampians, enables the visitor to experience the wilderness, wildflowers, waterfalls, wildlife and rock formations. Concealed in the mountains are many Aboriginal art sites. A destination for 'all seasons', the Wartook Valley offers year-round horse riding, rock climbing, mountain biking, as well as bird-watching. There is a wide range of accommodation to suit all budgets. The Valley offers outlets for food, fuel, bottle-shop, gas bottle refills, souvenirs, gifts, local produce, devonshire teas and much more.

Mount Arapiles and Little Desert

Travelling from Horsham to Mount Arapiles, **Toon State Park**, via Natimuk on the Wimmera Highway [C240], you will pass the turn off to Norton Estate Vineyard [Noradjuha Road] and later **Banksia Hill**, Hutchinson Road, Quantong. **Banksia Hill** is a bed and breakfast and gallery. Drive a little further on to Natimuk, only situated 20 kilometres west of Horsham, with many historic buildings that still grace the main street. A bustling community at the turn of the century until it was bypassed by the interstate highway and railway.



A sealed road to the lookout provides direct access to the short scramble to the summit of **Mount Arapiles**.

Continue on to Mount Arapiles, passing through Natimuk and experience the rocky terrain of world class rock climbing, and view the flat plains of the Wimmera from the lookouts. Drive along the Goroke-Natimuk Road [C213] and you will pass the **Duffholme Museum**, which features many aspects of life in the past (bookings are essential). Keep travelling on the [C213] to the **Jane Duff Memorial Park**, which commemorates the heroine of the 'Three Lost Children' true story, from the early days of settlement in the Wimmera. Turn right onto Harrow-Nhill Road, you will pass the **Stringybark walk** that offers three individuals loop walks ranging from 30 mins to 1.5 hours focusing on the flora and fauna of the Little Desert. Before reaching Nhill you will pass **Little Desert Nature Lodge** that offers half day or full day 4WD tours. It is also home to the Malleefowl, where you can view these special birds in the Malleefowl aviaries in their natural state.

Continue on to Nhill, then turn right and follow the Western Highway [A8] to **Pink Lake**. This lake is known for its colour and purity of its salt. From here continue into Dimboola and out to Horseshoe Bend to see where the **Wimmera River** meets the desert. View the magnificent giant river red gums and take in the park's vegetation while on the half hour **Pomponderoo Hill Nature Walk**.

Then you will continue back to Horsham passing the **Nicholas Olive Grove**, specialising in fine quality olive oil, tastings and light refreshments available by appointment, and stopping at the **Wail Native Plant Nursery and Arboretum**.

Limestone Coast to Horsham and the Grampians

Make your way from Naracoorte or Penola/Coonawarra area into Victoria, travel along the Wimmera Highway [C240] and visit West Wimmera as you make your way to Horsham. The first town to welcome you is the historic village of Apsley, surrounded by Red Gums, flora and fauna all still found in their natural environments.

The district features a historic walk, where you will learn about Apsley's history. The flowering gum located in Wallace Street is said to be the largest flowering gum in the Southern Hemisphere. Visit the **Apsley Estate Vineyard**.

Make your way back to Edenhope and visit the **Visitor Information Centre**, formerly the **Court House** [circa 1878], see the manner in which the prisoners were brought before the Judge. **The Magistrate's Bench, Prisoners Dock**, and the **Public Gallery** have been preserved in immaculate condition. Enjoy a stroll through an array of antiques and crafts.



Journey along the **Wimmera Highway** towards Horsham you will come across **Mount Arapiles Toon State Park** a spectacular feature, rising sharply

from the Wimmera plains is widely regarded as the top rock climbing area in Australia, and is world renowned.

Explore the two short walking tracks that link **Centenary Park** to the summit of Mount Arapiles. The sealed road allows easy access to a short walk to the summit. There are also short but interesting nature walks from the lookout road. For thousands of years an Aboriginal clan inhabited the area and there are a number of archaeological sites.

Just on from Mount Arapiles visit the small township of Natimuk, many historic buildings still grace the main street. Enjoy a coffee and visit the craft shop. Natimuk is renowned by rock climbers that flock from around the world, eager to tackle the Mount Arapiles cliffs. Make your way to Horsham and enjoy the cosmopolitan atmosphere.

Melbourne to Horsham and the Grampians

Make your way from Melbourne along the Western Highway to Ballarat, an integral part of Victoria's past with magnificent history and surroundings.

A must see is the Blood on the Southern Cross at **Sovereign Hill's** night time sound and light spectacular of the Eureka uprising. Or you may just visit the wonderful Sovereign Hill and experience the past.

Continue your drive along the Western Highway to Beaufort, and visit the **Challicum Hills Wind Farm**.

Explore the wonders of Ararat city which provide a diverse range of cultural and historical attractions. Glance into the past at the **J-Ward Gaol** and the **Langi Morgala Museum**. Discover Ararat's gold heritage at the **Gum San Chinese Heritage Centre** and visit the nationally recognised **Ararat Gallery** featuring a fine collection of fibre and textiles.

As you drive west be welcomed at **Great Western** and visit the many wineries in the area. It's also the place where Australia's most awarded sparkling wines are produced. Great Western is a place with a glorious history. Explore the neighbouring town of **Stawell** which is home to the **Stawell Gift**, the richest foot running carnival in the world held during the Easter period.

Continue your journey along the Western Highway to Dadswells' Bridge, famed for the **Giant Koala**.

The Koala is made from bronze and is the biggest in the world standing at fourteen metres. Visit the **Tourist Complex** and have a coffee break before heading on to Horsham, a lively city centrally located in the Wimmera region, with excellent opportunities for shopping, dining, entertainment and accommodation or divert onto the Wartook Valley in the Grampians.



The **Giant Koala**, located at **Dadswell's Bridge**

Great Ocean Road to Horsham via the Grampians

Continue your journey along the **Great Ocean Road** to Warrnambool located on the shores of beautiful **Lady Bay**. **Whale watching** is a feature in the cooler months, with Warrnambool being known as '**Victoria's Southern Right Whale Nursery**'. A few kilometres away in Port Fairy, the oldest seaport in the state. Port Fairy has many historic buildings and cottages, which have been delightfully restored.

As you head north you will approach Peshurst. Visit the **Volcanoes Discovery Centre** where you will find how volcanoes are formed, their geology, their history in the Western District. **Mount Rouse** rises 120 metres above the surrounding landscape, from the peak there are panoramic views of Western District.

Make your way to the charming town of Dunkeld, nestled at the foot of the Southern Grampians. A delightful place to stop and have a break. Drive to the small township of Cavendish, established as a memorial to those **Solider Settlers**. Explore the Settlers Walk through the garden beside the Police Station and follow the boardwalk along the riverbank.

Head North along the Henty Highway [A200] towards Horsham. You will come across the **Black Range State Park**. The State Park holds its own in the shadow of the majestic **Grampians National Park**. Rugged sandstone cliffs and caverns, rare flora and fauna and significant Aboriginal cultural heritage make a distinct impression. You deserve a well earned rest, relax and enjoy the Cosmopolitan atmosphere that Horsham has to offer.



The **Black Range State Park** is home to rare or threatened **Brolga, Royal Spoonbill, Freckled Ducks, and White-bellied Sea Eagles**. Enjoy a bushwalk from the

Mudadgin Picnic Ground to the top of the **Black Range** for wonderful views of the **Grampians Ranges** and surrounding plains.